



Mymmms Drive | Brookmans Park | Hertfordshire | AL9 7AF

Price Guide £2,250,000

FINE & COUNTRY




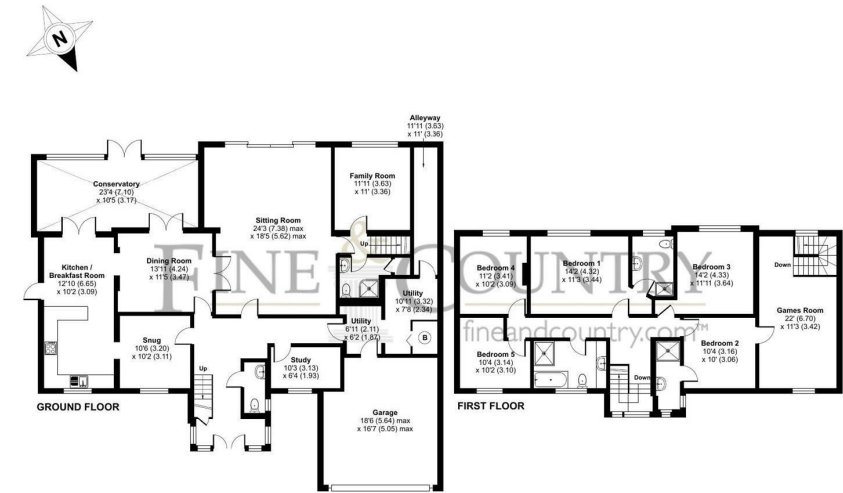
Mymms Drive | Brookmans Park  
Hertfordshire | AL9 7AF  
Price Guide £2,250,000

Set on one of Brookmans Park’s most desirable roads, this spacious six-bedroom detached home sits on a wider-than-average plot and offers a lot of versatile living space backing directly onto Gobions Woods for a peaceful and scenic setting. Gated for privacy, the property features ample off-street parking and a beautifully landscaped 120ft south-facing garden.

- DETACHED FAMILY HOME
  - 5 RECEPTION ROOMS
  - SOUTH FACING GARDEN
  - BACKING ONTO GOBIONS
- 6 BEDROOMS
  - WIDE PLOT
  - GATED
  - DRIVEWAY



Energy Efficiency Rating		
	Current	Potential
Very energy efficient - lower running costs		
(92 plus) <b>A</b>		<b>82</b>
(81-91) <b>B</b>		
(69-80) <b>C</b>		
(55-68) <b>D</b>		
(39-54) <b>E</b>	<b>54</b>	
(21-38) <b>F</b>		
(1-20) <b>G</b>		
Not energy efficient - higher running costs		
England & Wales		EU Directive 2002/91/EC 



Floor plan produced in accordance with RICS Property Measurement 2nd Edition, incorporating International Property Measurement Standards (IPMS2 Residential). © richcom 2025. Produced for Fine & Country. REF: 1264299

The Estate Office  
Bradmore Green  
Brookmans Park  
Hatfield  
Hertfordshire  
AL9 7QS  
01707 662222

brookmanspark@fineandcountry.com